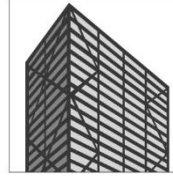
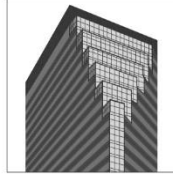
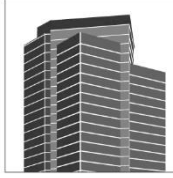


*Southfield*  
TOWN CENTER



Transwestern

3000 Town Center, Suite 2500

248-350-2222

[SouthfieldTC@transwestern.com](mailto:SouthfieldTC@transwestern.com)

- Kim Peterson – General Manager - 248.761.7919  
[Kim.peterson@transwestern.com](mailto:Kim.peterson@transwestern.com)
- Nick Amato – Operations Manager – 248.514.5161  
[Nick.amato@transwestern.com](mailto:Nick.amato@transwestern.com)
- John Druskinis – Construction Manager – 248.440.1440  
[John.druskinis@transwestern.com](mailto:John.druskinis@transwestern.com)
- Cheryl Bryk – Construction Coordinator – 248.440.1422  
[Cheryl.bryk@transwestern.com](mailto:Cheryl.bryk@transwestern.com)
- Joan Solarz – Project Accountant – 248.440.1412  
[Joan.solarz@transwestern.com](mailto:Joan.solarz@transwestern.com)
- Karen McLellan – Project Accountant – 248.440.1444  
[Karen.mclellan@transwestern.com](mailto:Karen.mclellan@transwestern.com)
- Joan Collis – Coordinator Leasing/Management – 248.440.1452  
[Joan.collis@transwestern.com](mailto:Joan.collis@transwestern.com)
- Karen Jakubiec – Administrative Associate – 248.350.2222  
[Karen.jakubiec@transwestern.com](mailto:Karen.jakubiec@transwestern.com)
- Yvonne Krupa – Tenant Liason/Coordinator – 248.440.1425  
[Yvonne.krupa@transwestern.com](mailto:Yvonne.krupa@transwestern.com)

## LEASING / TENANT ADVISORY

- Clarence Gleeson – Sr. Vice President – 248.613.9580  
[Clarence.gleeson@transwestern.com](mailto:Clarence.gleeson@transwestern.com)
- Nicholas Prokop – Associate – 248.207.0913  
[Nicholas.prokop@transwestern.com](mailto:Nicholas.prokop@transwestern.com)
- Patrick Schlenke – Associate – 248.440.1448  
[Patrick.schlenke@transwestern.com](mailto:Patrick.schlenke@transwestern.com)